



Network Diagnostic Analyzer TM2000

- Do you have any problem about your network systems?
ex. Response down or No response.
- How do you analyze of the server or network trouble?

Network Diagnostic Analyzer
TM2000



- TM2000 can enable your network system quality.
- TM2000 is effective to analyze the real-time systems,
such as videoconference.

Network Diagnostic Analyzer TM2000

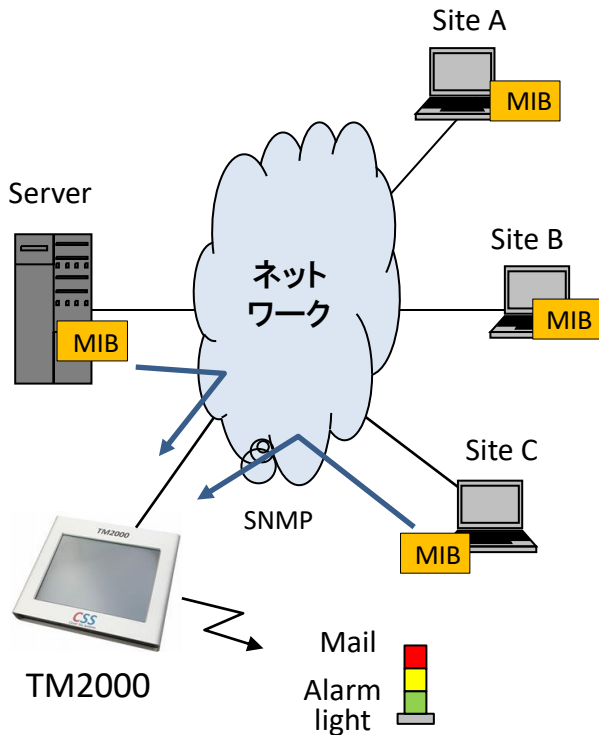
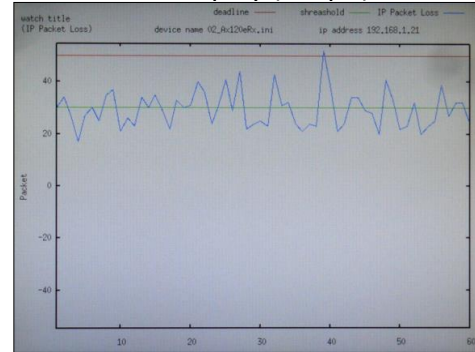
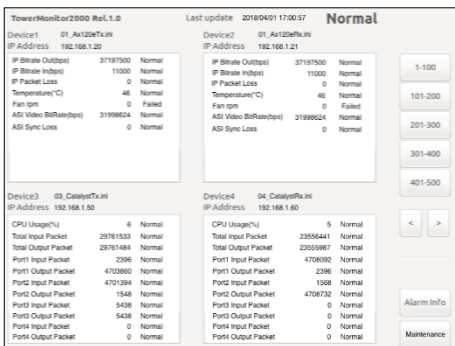
- TM2000's possible to analyze 10,000 Items/1,000 Network Devices in real time.
- TM2000 collects MIBs(traffic, packet discard, packet error, etc.)/delay time and save the logs as CSV files.
- Tower Monitor Viewer's possible to browse Network Devices Status.
- Compact , robust and portable; ideal for network construction, maintenance and operation

MIB : Management Information Base

LCD display (Normal)

LCD display (Major Alarm)

LCD display (Graph)



Specifications

| | |
|------------------------------|---|
| Function | Network Monitoring Devices : Max. 1,000 |
| | Monitoring items : Max. 10,000 |
| | MIB polling time: Min. 1 second |
| | Delay time of network equipment can be displayed and stored. |
| | Display and storage of event logs. |
| | Alarm notification by mail. |
| Storage | RAM 4GB、SSD 128GB |
| | CPU Intel Apollo Lake E3930, 1.3 GHz, up to 1.8 GHz |
| OS | Linux |
| interface | RJ45 GbEx2/USB3.0x2/HDMI/DP/COM |
| Power supply | 100V-240V, 50/60Hz |
| Power consumption | 25W |
| Chassis specifications | H3.5cm / W23.0cm / D20.0cm |
| Weight | 1.6Kg |
| Environmental specifications | Operating temperature: 0-45°C Operating humidity: 25-85% (no condensation) |

Clever Sky Systems Co., Ltd.

Headquarter: 3-48-11 Asagayaminami, Suginami-ku,
Tokyo, 166-0004, Japan
URL: <http://www.cleverskysystems.com/>
Mail: info@cleverskysystems.com